

#### A Table:

Plywood gets its strength from laminated a series of alternating grains. This proposal takes the same concept and turns it into a method of constructing a table by alternating directions and weaving layers of plywood. Just as every material has certain properties that dictate how it can be used, mechanically laminating and clamping layers to form rigid connections is a way of expressing the properties of plywood itself, which highlights the importance of the material. The table is built entirely without fasteners or glue, conveying that good design does not have to be excessive.

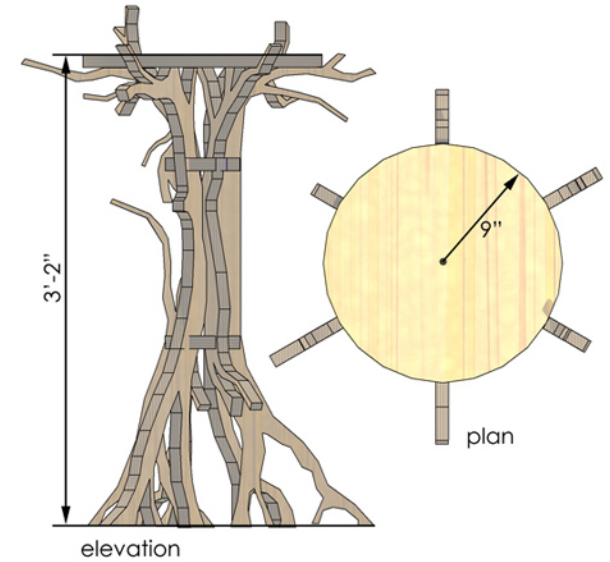
The size of the table is directly proportional to the amount of material that can be cut out of a sheet of 4'x8' plywood. An efficient layout of all the pieces ensures minimal waste.

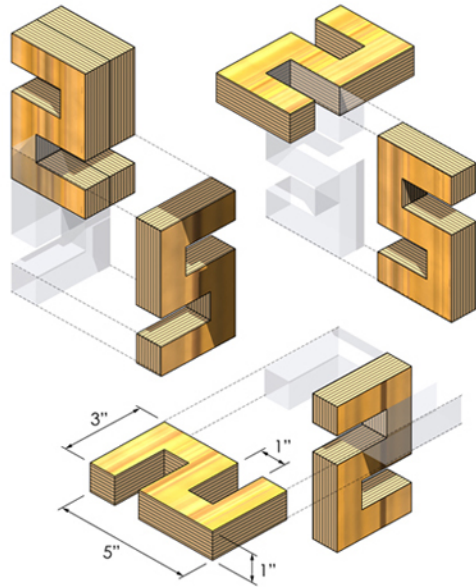


**A Tree:**

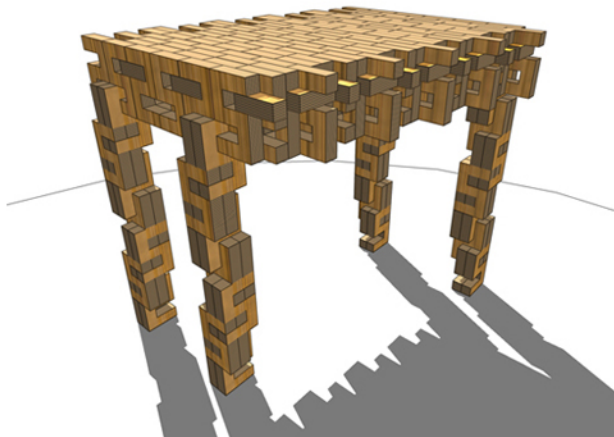
In order to raise awareness of the product itself, I propose building a table and a symbol of sustainability as well. The literal interpretation of a tree is important to raise a clear understanding of the intention of the piece as a symbol. At the same time, it's a useable table that explores a different approach to what a functional piece of furniture should look like and how a material like plywood can be constructed. The importance of functionality cannot be overlooked because, in fact, there is no such thing as a sustainable material without the actual functional material itself.

One sheet of plywood yields two tables, the beginnings of a forest. They are easily assembled and use a slotted groove at each joint to ensure stability.

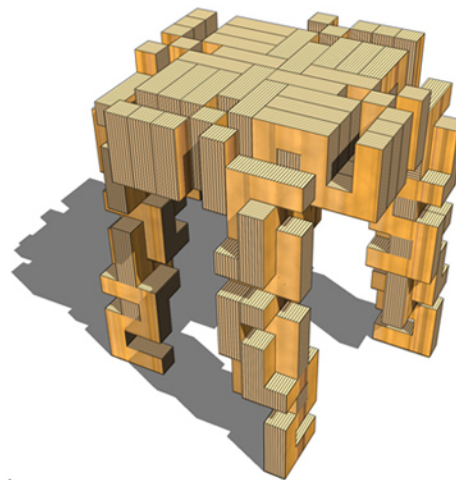




Table



Stool



Poster Easel



### A Puzzle:

Sustainability is not only about improving the things people buy, but the way they use those products as well. I propose to cut the sheet of FSC-certified piece of plywood into 250 puzzle pieces. These pieces can be used in any creative combination to make an infinite number of functional items. Submitted are a series of images depicting 3 of the infinite possibilities anyone can make with the plywood puzzle.

A puzzle brings inevitable awareness to what's being done with the pieces. As a means of awareness this offers an interactive way to rethink how plywood can be used. A kit of parts is timeless, and offers the flexibility to be re-used an infinite number of ways. Remember, re-use is even better than recycling! It also shows us that sustainability doesn't have to be boring, but can even be a creative activity for anyone.

The shape of the piece maximizes the amount of interlocking joint configurations. Because they are proportioned similar to a 4'x 8' sheet of plywood, 250 pieces lay out efficiently, without excessive waste.